

tineco

iFLOOR 2 SERIES

Cordless Vacuum & Floor Washer

Instruction Manual



*Actual product may differ from illustration.

CONTENTS

Important Safety Instructions.....2

Overview.....5

Assembly6

Operation.....7

Maintenance11

Specifications14

Troubleshooting.....15

Warranty16

Important Safety Instructions

SAVE THESE INSTRUCTIONS

Household use only.

When using an electrical appliance, basic precautions should always be followed, including the following:

READ ALL INSTRUCTIONS BEFORE USING (THIS APPLIANCE). Failure to follow the warnings and instructions may result in electric shock, fire and/or serious injury.

WARNING – To reduce the risk of fire, electric shock, or injury:

1. This appliance can be used by children aged from 8 years and above and persons with reduced physical, sensory or mental capabilities or lack of experience and knowledge if they have been given supervision or instruction concerning use of the appliance in a safe way and understand the hazards involved. Children should not play with the appliance. Cleaning and user maintenance shall not be performed by children without supervision.
2. The appliance is not to be used by persons (including children) with reduced physical, sensory or mental capabilities, or lack of experience and knowledge, unless they have been given supervision or instruction.
3. Use only indoors, on non-carpeted floor surfaces such as vinyl, tile, sealed wood, etc. Be careful not to run over loose objects or edges of area rugs. Stalling the brush may result in premature belt failure.
4. Do not allow to be used as a toy. Close attention is necessary when used by or near children, pets or plants.
5. Use only as described in this manual. Use only manufacturer's recommended attachments.
6. Do not use with a damaged cord or plug. If appliance has been dropped, damaged, left outdoors, dropped into water, or is not working as it should, return it to a service center.
7. Do not handle charger, including charger plug, and charger terminals with wet hands.
8. Do not put any object into openings. Do not use with any opening blocked; keep free of dust, lint, hair, and anything that may reduce air flow.
9. Keep hair, loose clothing, fingers, and all parts of your body away from openings and moving parts.
10. Use extra care when cleaning on stairs.
11. Do not use to pick up flammable or combustible liquids, such as gasoline, or use in areas where they may be present.
12. Do not pick up anything that is burning or smoking, such as cigarettes, matches, or hot ashes.
13. Do not use without filter.
14. Prevent unintentional activation. Ensure the switch is in the off-position before picking up or carrying the appliance. Carrying the appliance with your finger on the switch or energizing appliance that have the switch on invites accidents.
15. Always switch off the appliance before making any adjustments, changing accessories, or storing the appliance. Such preventive safety measures reduce the risk of starting the appliance accidentally.

16. Recharge only with the charger specified by Tineco. A charger that is suitable for one type of battery pack may create a risk of fire when used with another battery pack.
17. Use appliances only with specifically designated Tineco battery packs. Use of any other battery packs may create a risk of injury and fire.
18. Under abusive conditions, liquid may be ejected from the battery; avoid contact. If contact accidentally occurs, flush with water. If liquid comes into eye contact, seek medical help. Liquid ejected from the battery may cause irritation or burns.
19. Do not use a battery pack or appliance that is damaged or modified. Damaged or modified batteries may exhibit unpredictable behavior resulting in fire, explosion or risk of injury.
20. Do not expose a battery pack or appliance to fire or excessive temperature. Exposure to fire or temperature above 266°F (130°C) may cause an explosion.
21. Follow all charging instructions and do not charge the battery pack or appliance outside of the temperature range specified in the instructions. Charging improperly or at temperatures outside of the specified range may damage the battery and increase the risk of fire.
22. Have servicing performed by a qualified repair person using only identical replacement parts. This will ensure that the safety of the product is maintained.
23. This appliance contains battery cells that are non-replaceable. Do not modify or attempt to repair the appliance or the battery pack except as indicated in the instructions for use and care.
24. Always turn off this appliance before connecting or disconnecting the motorized nozzle.
25. Do not charge or store the appliance outdoors or inside the car. Only charge, store or use the battery in a dry indoor area where the temperature is higher than 39.2°F (4°C) but lower than 104°F (40°C). The charger is for indoor use only.
26. Do not use to pick up ultrafine particles, such as lime, cement, sawdust, gypsum powder, or ashes.
27. Do not use to pick up sharp objects, such as metallic nails, pieces of glass, metal paper clips, or pins.
28. Do not use to pick up hazardous material and chemicals, such as solvent, drain cleaner, strong acids, or strong alkali.
29. Stop using immediately if the appliance is overheating, making unusual noises, producing unusual odors, performing low suction, or leaks electricity.
30. Turn cleaner OFF and disconnect from electrical outlet for long-term storage.
31. Always clean the Dirty Water Tank after each use to avoid potential blockage, which may lead to low suction power, motor overheating, or reduce the service life of the appliance.
32. Store appropriately indoors in a dry place after use.
33. Do not place or submerge appliance in standing water or try to clean flooded areas.
34. All data and technical instructions of this manual are based on results from lab tests of Tineco or designated third parties. The company reserves all rights for final explanations.
35. The plug must be removed from the socket-outlet before cleaning or maintaining the appliance.
36. A hazard may occur if the appliance runs over the supply cord.
37. Do not use the appliance when the water depth is more than 5mm above the surface.

Range of Usage

1. The cordless hard floor cleaner is to be used on indoor hard floors, such as vinyl, tile, sealed wood, etc. Use on a rough surface may not get the best performance.
2. Keep your appliance away from heat sources, such as fireplace or heater, to avoid casing deformation.
3. Do not use to pick up flammable or combustible liquids, ultrafine particles, sharp objects, hazardous material, chemicals or anything that is burning or smoking, as described above.

About Cleaning Solution

1. A large amount of cleaning solution entering into the motor may cause damage to the appliance.
2. Add solution as instructed in the Product Operation section. We recommend using the provided cleaning solution. Do not use the product with acidic, alkaline solution, or any substances harmful to the environment.
3. Keep out of reach of children. If any solution gets into the eyes, immediately flush them with clean water. If any solution is swallowed by accident, seek medical care immediately.
4. Dirty water and solution disposal should comply with local environmental regulations.

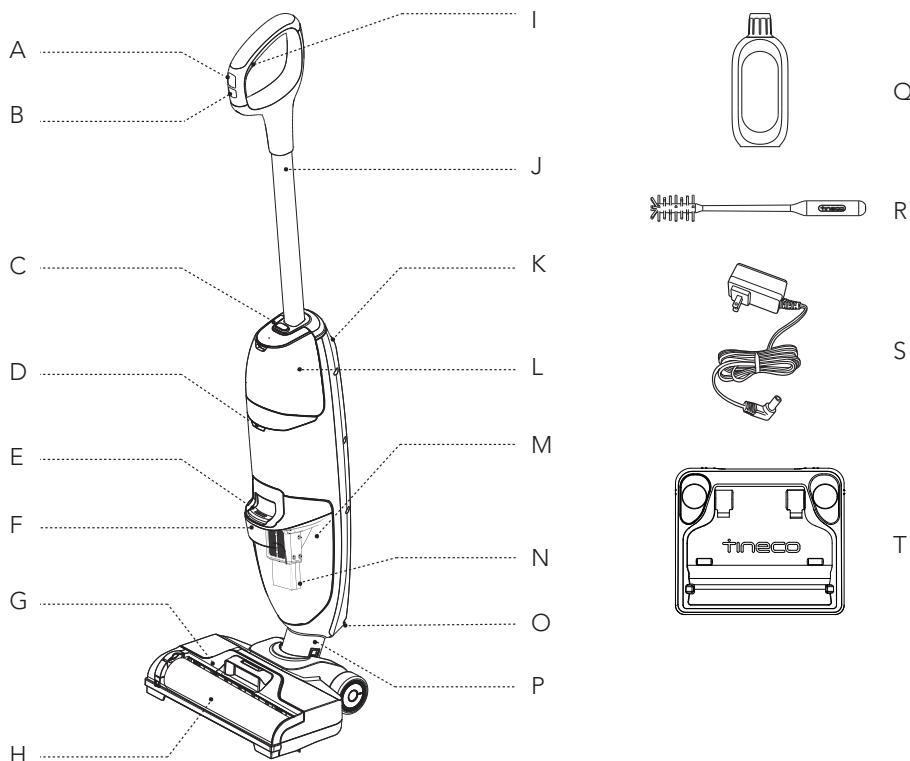
About the Appliance

1. Do not modify or attempt to repair the appliance except as indicated in the instructions for operating and cleaning.
2. Charge the appliance with the Tineco adaptor. Input Voltage: AC 100-240V. Both high and low voltages can damage the adaptor, appliance, or even cause danger to the user.
3. Use extra care when cleaning on stairs.
4. Ensure that the Power Switch is in the OFF-position before picking up or carrying the appliance. Do not lay flat or lean the appliance so as to prevent dirty water from entering into the motor.
5. To avoid being tripped accidentally, please put away the appliance on the charging base.
6. Always install the Dirty Water Tank and Clean Water Tank properly before use.
7. Do not allow the appliance or charger to get wet to avoid risk of fire or injury caused by a short circuit.

Overview

Note:

Accessories may vary between markets. If you require more accessories, please go to www.tineco.com or store.tineco.com.



- A. Switch Button
- B. Spot Button
- C. Clean Water Tank Release
- D. Indicator Light
- E. Dirty Water Tank Release
- F. Dirty Water Tank Handle
- G. Brush Roller Cover
- H. Brush Roller
- I. Solution Trigger
- J. Tube

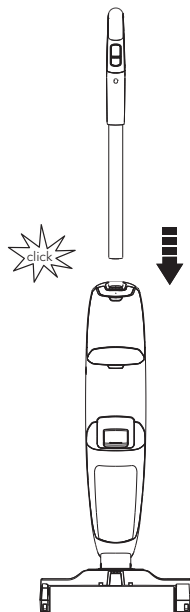
- K. Handle Fix Screw
- L. Clean Water Tank (CWT)
- M. Dirty Water Tank (DWT)
- N. Floater
- O. Air Outlet Cover
- P. Brush Rotator
- Q. Deodorizing & Cleaning Solution
- R. Cleaning Tool
- S. Adaptor
- T. Self-cleaning Storage Tray

Assembly

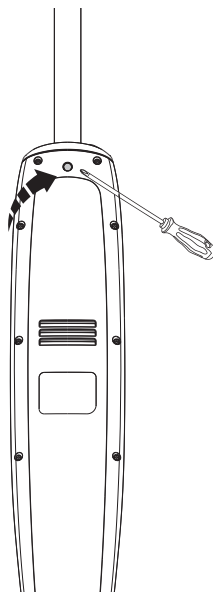
How to Assemble/Disassemble

Note:

For water tank and brush assembly, please refer to "Operation" and "Maintenance".



To assemble the handle, insert it into the appliance until you hear a "Click".



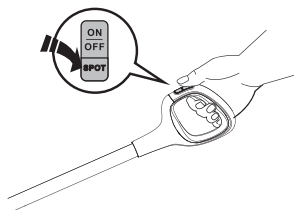
In the event that the product must be returned, please disassemble the handle. Press the spring to release the handle with a tool (like a screwdriver) and lift the released handle from the appliance.

Operation

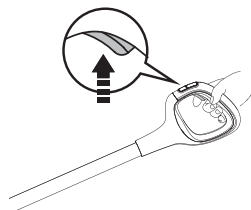
Preparing for Use

Before first use, please charge the appliance for 4-5 hours (refer to "Charging Instructions" for details).

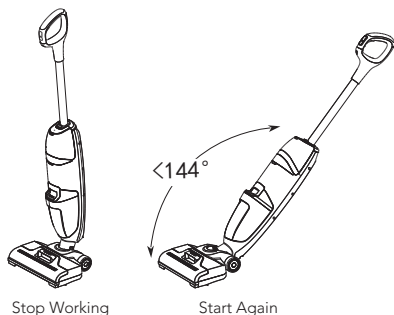
* Based on results from Tineco lab tests. Lab temperature 39.2°F (4°C) ~ 104°F (40°C). Use directly when you just need to absorb water; add water/solution when you need to deep clean the floor (refer to "Filling Clean Water Tank" for details).



Switch ON to start the appliance. Press Spot button for spot mode to remove tough spots and stains with higher speed and stronger spray.

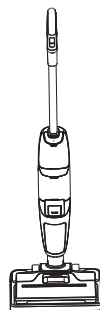


Squeeze the Solution trigger when moving backward to spray liquid as needed.



The appliance will stop working when put uprightly and start running again when you recline.

* Do not recline more than 144° to protect against water leakage.



Place the appliance on the storage tray vertically after use.

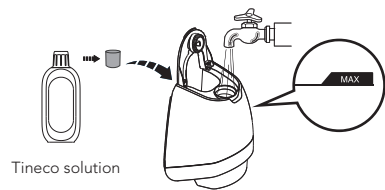
Note:

- Do not vacuum foamed liquid.
- It takes about 5 mins to dry the floor in normal mode/8 mins in Spot mode, depending on cleaning environment.
- To dry the floor faster and avoid over wetting, please release the trigger after each spray of liquid.

Filling Clean Water Tank



Press the Clean Water Tank release button to remove it from the appliance.



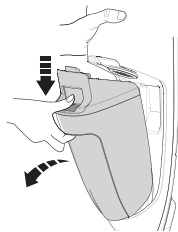
Open the tank cap, fill the tank with tap water to MAX line. When deep cleaning is necessary, add one bottle cap of solution to the CWT and tightly close the cap.

Note:
Only use water under 140°F/60°C.
DO NOT USE HOT WATER.

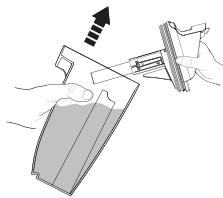


Place the tank back into the appliance. You should hear a “Click” if done correctly.

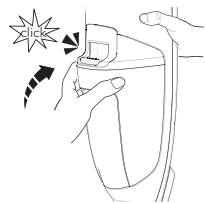
Emptying Dirty Water Tank



Press the Dirty Water Tank release button to remove it from the appliance.

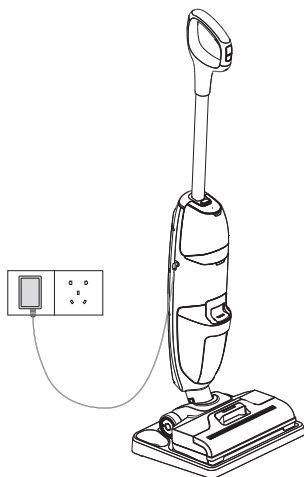


Pour dirty water and debris out.



Place the tank back until you hear a click.

Charging Instructions



The indicator light will blink pink when it's low battery, please charge it.

1. To charge the appliance, connect the external charging cord to the main body and plug it into the wall outlet.
2. To avoid tripping hazards, please place the appliance on the charging base near a wall during charging.

Warning:

- Only charge the appliance with the adaptor supplied by Tineco.
- During long periods of not being used, the appliance must be charged once every 3 months for optimal performance. It may take 4-5 hours for a full charge.
- Store indoors in a dry place. Do not expose the appliance to sunlight or freezing temperatures. Recommended temperature range: 39.2°F (4°C) ~ 104°F (40°C).

Indicator

When in Use



Solid blue light: normal mode



Blinking blue light: spot mode



Blinking pink light: out of power



Rapidly blinking pink light: brush roller is blocked, or DWT is full



Solid red light: battery is overheated, see troubleshooting



Blinking red light: fault, see troubleshooting

During Charging



Breathing blue light: charging

Charging Complete



Solid blue light for 2 minutes then light off



Battery Disposal Warning:

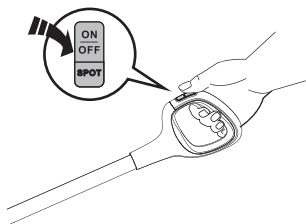
- Remove the built-in battery before disposing.
- Switch OFF and disconnect plug from electrical outlet before removing the battery.
- Dispose of batteries properly and safely. DO NOT dispose of battery in fire, water, soil or trash compactor.
- Leaks from battery cells can occur under extreme conditions. If any liquid gets on the skin wash quickly with soap and water. If any liquid gets into the eyes, do not rub eyes, immediately flush them with clean water continuously for a minimum of 15 minutes. Seek medical attention immediately.

Maintenance

Note:

- For optimal performance and to prevent odors, always **clean** and **dry** DWT, floater, filters, brush roller, brush roller cover **completely** after each use.
- Please make sure each part is installed correctly or the appliance may not work properly.
- After maintenance, place the appliance on the storage tray vertically. Do not expose the appliance to direct sunlight, and store it indoors in a dry place.

Main Body

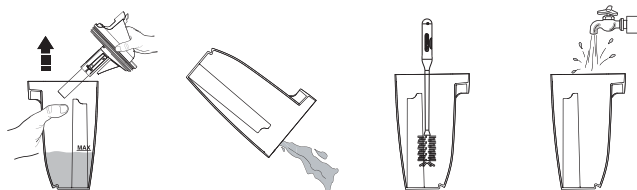


To reduce the risk of injury, switch off before performing maintenance.



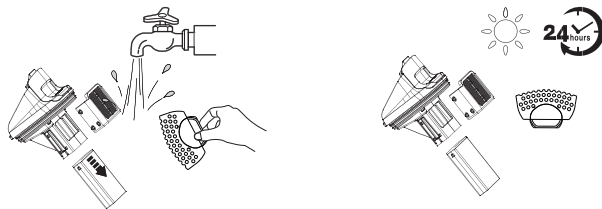
Use a cloth to clean the surface with a neutral detergent. The cloth should be dry to prevent water from entering the appliance.

Dirty Water Tank



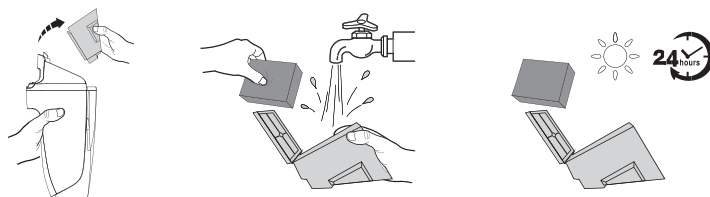
- Pink light rapidly blinking and dirty water reaching the MAX line indicates it's time to switch off the appliance.
- Pull up the tank lid to empty the DWT. Use the cleaning tool to remove remaining debris. Rinse the inside of the DWT and place back into the appliance.

Filter & Floater



If the filter and the floater have been blocked, rinse with water.
Remove the filter from the tank lid, remove the floater, and rinse both parts with water.

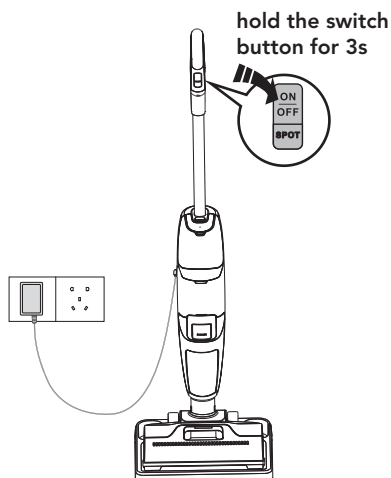
Pre-filter



Grasp recessed area on each side of the pre-filter and pull upward. Rinse under running water and must be completely dry before recombining with the lid of the DWT.

* A spare sponge is provided with the Instruction Manual for convenient replacement.

Brush Roller Self-cleaning

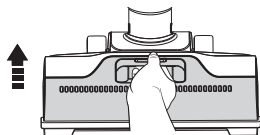


1. Place the appliance on the storage tray, and plug the adaptor into the main body.
2. Press and hold the switch button for 3s and begin the self-cleaning process.
3. The appliance will automatically shut off once finished.

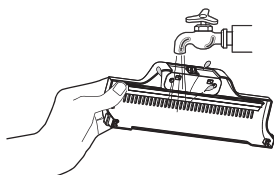
Note:

- For optimal performance, use quick self-cleaning function as often as needed.
- The Clean Water Tank should be at least 1/3 full of water.
- Please empty the Dirty Water Tank before and after self-cleaning.

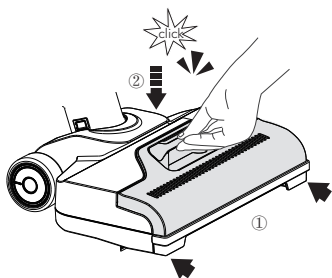
Brush Roller Cover



Grab the front handle while pressing the button and pull upward to remove.

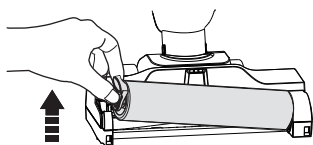


Rinse with water.

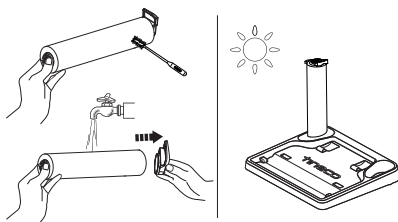


When replacing, always latch the brush cover into place to avoid leakage.

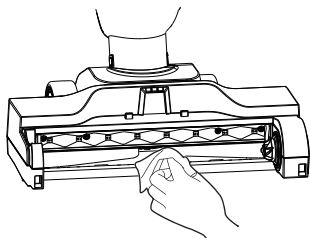
Brush Roller



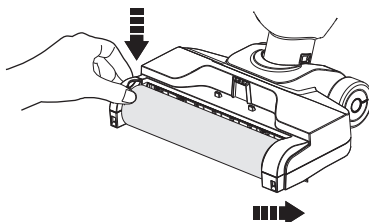
Remove the brush roller by grabbing the brush roller tab and pulling upward.



Remove the brush roller tab. Using the cleaning tool, remove the hair and debris wrapped around the roller and rinse with water. Replace the brush roller back onto the storage tray, and allow it to dry completely before reinstalling.



Remove hair and debris from the brush roller chamber and the opening with a tissue or a damp cloth.



Replace the brush roller by inserting the brush roller end into the right side of the holder, then lock the pull tab into place by pressing downward.

Specifications

Product	iFLOOR 2 Series
AC Input	100~240V
Voltage	22.2V== 2500mAh Lion
Rated Power	120W
Running Time	~22 mins
Charging Time	4-5 hrs
Water Flow Rate	Normal: about 50ml/min Spot: 100ml/min
CWT Capacity	17.92FL.OZ.(530ML)
DWT Capacity	13.53FL.OZ.(400ML)
Waterproof	IPX4

Troubleshooting

Problem	Possible cause	Solution
Weak suction	The dirty water in DWT has reached the MAX line	Empty the dirty water and then reinstall the DWT
	The sponge in the filter is dirty	Clean the sponge and filter
	The debris channel or the airway is blocked	Remove blockages
	Brush roller malfunction	Too much wear of brush roller, please replace it
Abnormal motor sounds	The debris channel or the airway is blocked	Remove blockages
	The dirty water in DWT has reached the MAX line	Empty the dirty water and then reinstall the DWT
Appliance won't charge	The external charger cord not correctly plugged	Reinsert the adaptor correctly
Appliance won't spray	The CWT may be empty	Refill CWT
	The CWT may not be installed correctly	Install the CWT correctly
Air outlet cover is leaking water	The floater or the sponge in the filter is not installed	Install the floater and the sponge correctly
	The dirty water in DWT has reached the MAX line	Empty the dirty water and then reinstall the DWT
	The sponge in the filter is moist	Allow the sponge to dry completely
	The floater is blocked	Remove blockages
	High foam cleaning solution is used	Use Tineco-provided cleaning solution or low foam solution
The appliance does not turn on/Blinking pink light	Out of power	Charge the appliance
Solid red light	Battery is overheated	Restart after cooling down
Rapidly blinking pink light	Brush roller is blocked, or DWT is full	Remove blockages or clean the DWT
Blinking red light	The adaptor is not designed for this appliance	Use the original adaptor
	Motor failure	Contact customer service
The light blinks alternatively blue and red	Appliance defective	Contact customer service

Note:

If the above troubleshooting guide fails to provide a solution, please visit our website www.tineco.com for further support.

Warranty

2-YEAR LIMITED WARRANTY

- Only applies to purchases made from authorized retailers of Tineco.
- Is subject to the adherence of the requirements outlined in this instruction manual, and is subject to further conditions outlined below.
- This warranty is governed by and construed under the laws of the country in which the purchase took place. We provide 2-year warranty or a warranty period as stipulated by applicable local law, whichever is longer.

WHAT IS COVERED?

- Your Tineco appliance has a 2-year warranty against original defects in material and workmanship, when used for private household purposes in accordance with the Tineco Instruction Manual. Motorized accessories and battery bought separately come with a 1-year warranty.
- This warranty provides, at no extra cost to you, all labor and parts necessary to ensure your appliance is in proper operating condition during the warranty period.
- This warranty will only be valid if the appliance is used in the country in which it was sold.

WHAT IS NOT COVERED?

Tineco shall not be liable for costs, damages or repairs incurred as a result of:

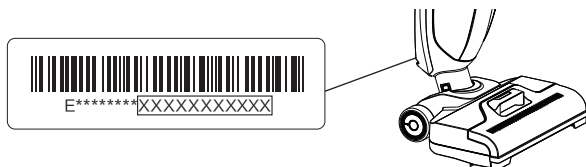
- Appliances purchased from an unauthorized dealer.
- Careless operation or handling, misuse, abuse and/or lack of maintenance or use not in accordance with the Tineco Instruction Manual.
- Use of the appliance other than for normal domestic purposes, e.g. for commercial or rental purposes.
- Use of parts not in accordance with the Tineco Instruction Manual.
- Use of parts and accessories other than those produced or recommended by Tineco.
- External factors unrelated to product quality and use, such as weather, modifications, accidents, electrical outages, power surges or acts of God.
- Repairs or alterations carried out by unauthorized parties or agents.
- Failing to clear blockage and other hazardous material from the appliance.
- Normal wear and tear, including normal wearing parts, such as clear bin, belt, filter, HEPA, brush bar, and power cord (or where external damage or abuse is diagnosed), carpet or floor damage due to use not in accordance with manufacturer's instructions or failure to turn the brush bar off when necessary.
- Reduction in battery discharge time due to battery age or use.

WARRANTY LIMITATIONS

- Any implied warranties relating to your appliance including but not limited to warranty of merchantability or warranty of fitness for a particular purpose, are limited to the duration of this warranty.
- Warranty coverage applies to the original owner and to the original battery only and is not transferable.
- This limited warranty gives you specific legal rights. You may also have other rights which vary by region.
- Manufacturer's warranties may not apply in all cases, depending on factors such as use of the product, where the product was purchased, or who you purchased the product from. Please review the warranty carefully, and contact the manufacturer if you have any questions.

WARRANTY SERVICE

Register: We highly recommend that upon purchase, you register your appliance on the Tineco official website (www.tineco.com) and enjoy exclusive benefits. To register, please enter the last 11 digits of the serial number (find the Serial Number at the air outlet cover). Failure to register your product won't diminish your warranty rights.



How to Claim: Please retain your proof of purchase. To make a claim under our Limited Warranty, you need to provide your serial number and the original purchase receipt with the purchase date and order number on it.

All work will be carried out by Tineco or its authorized agency.

Any replaced defective parts will become the property of Tineco.

Service under this warranty will not extend the period of this warranty.

Visit Tineco website **www.tineco.com**
for expert customer service.

tineco
Live Easy.
Enjoy Life.

